

À louer | For lease



12300, Albert-Hudon

Montréal (Québec)

± 41 820 pi² | sq. ft.



Une localisation stratégique pour dynamiser votre entreprise !

A strategic location to boost your business!



Proche de l'autoroute 25 et
boulevards Henri-Bourassa et
Léger | Close to Highway 25
and Henri-Bourassa and Léger
boulevards.



Zone industriel | Industrial area



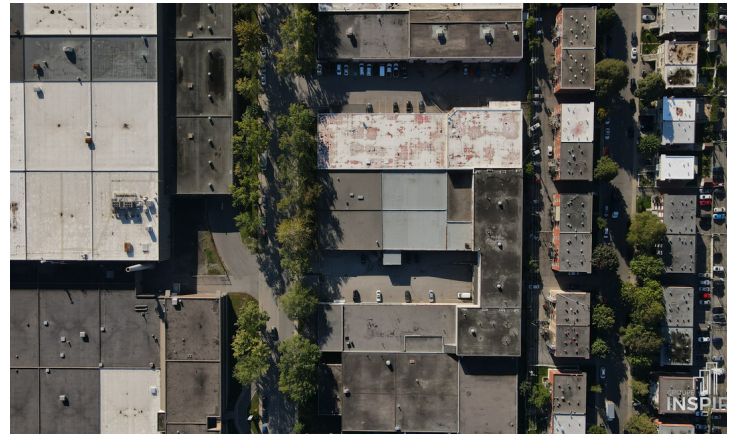
Vaste stationnement |
Ample parking space



Espace bureau et entrepôt
combinés |
Combined office and
warehouse space

DESCRIPTION DE LA PROPRIÉTÉ / PROPERTY DETAILS

Superficie du bâtiment (pi ²) Building Size (sq. ft.)	± 41 820
Entrepôt (pi ²) Warehouse (sq. ft.)	± 34 000
Bureaux (pi ²) Office (sq. ft.)	± 7 820
Terrain (pi ²) Land Size (sq. ft.)	± 45 375
Hauteur libre (pi) Clear Height (ft.)	12-13
Quais de chargement Truck-Level Doors	1
Gicleurs Sprinklers	Oui Yes
Stationnement Parking Stalls	Ample Vast

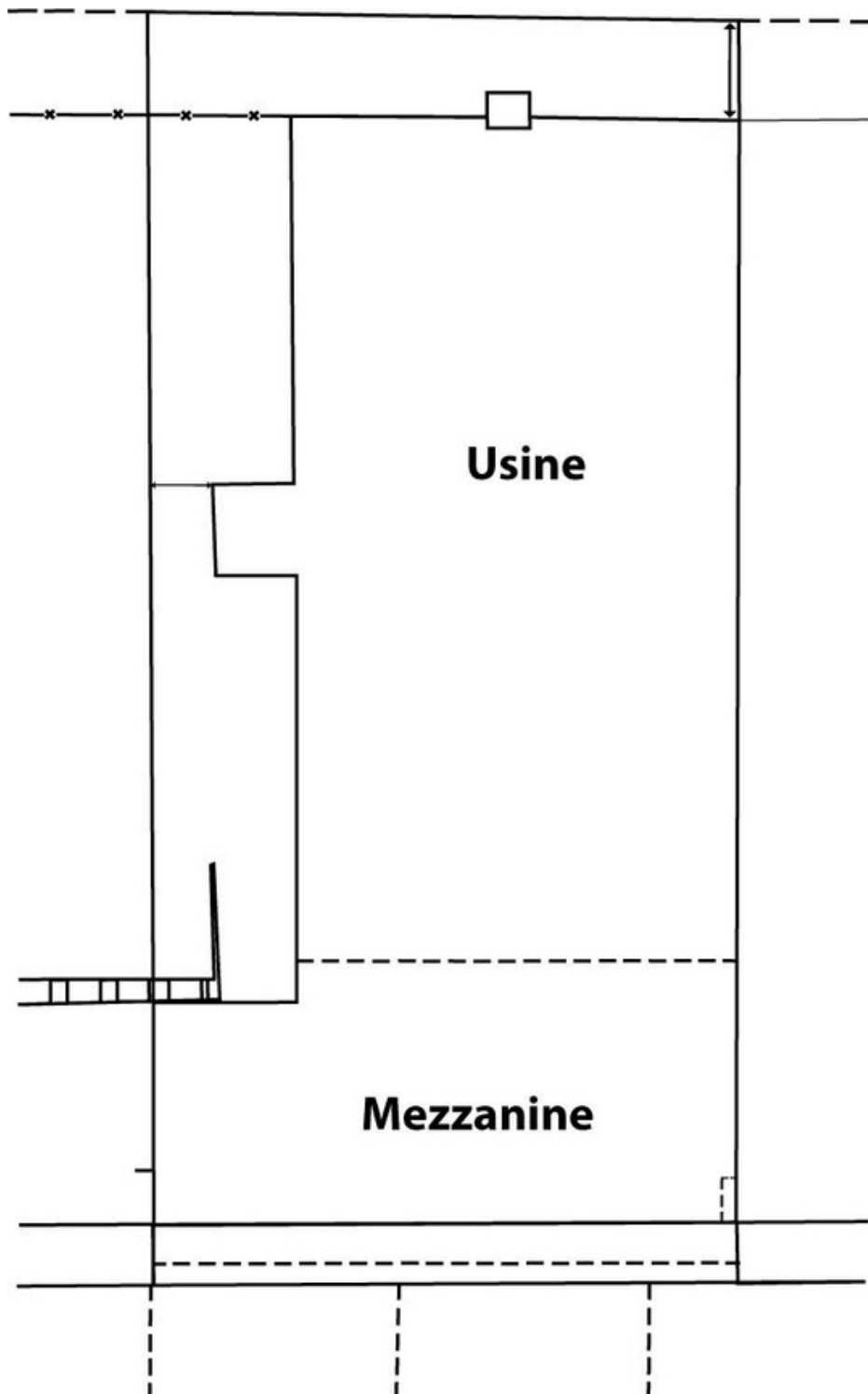


INFORMATION FINANCIÈRE / FINANCIAL INFORMATION

Loyer brut demandé (pi ²) Asking Gross Rent (sq. ft.)	Contactez-nous Contact Us
Frais d'exploitation (pi ²) Operating Expenses (sq. ft.)	Contactez-nous Contact Us
Disponibilité Availability	Contactez-nous Contact Us

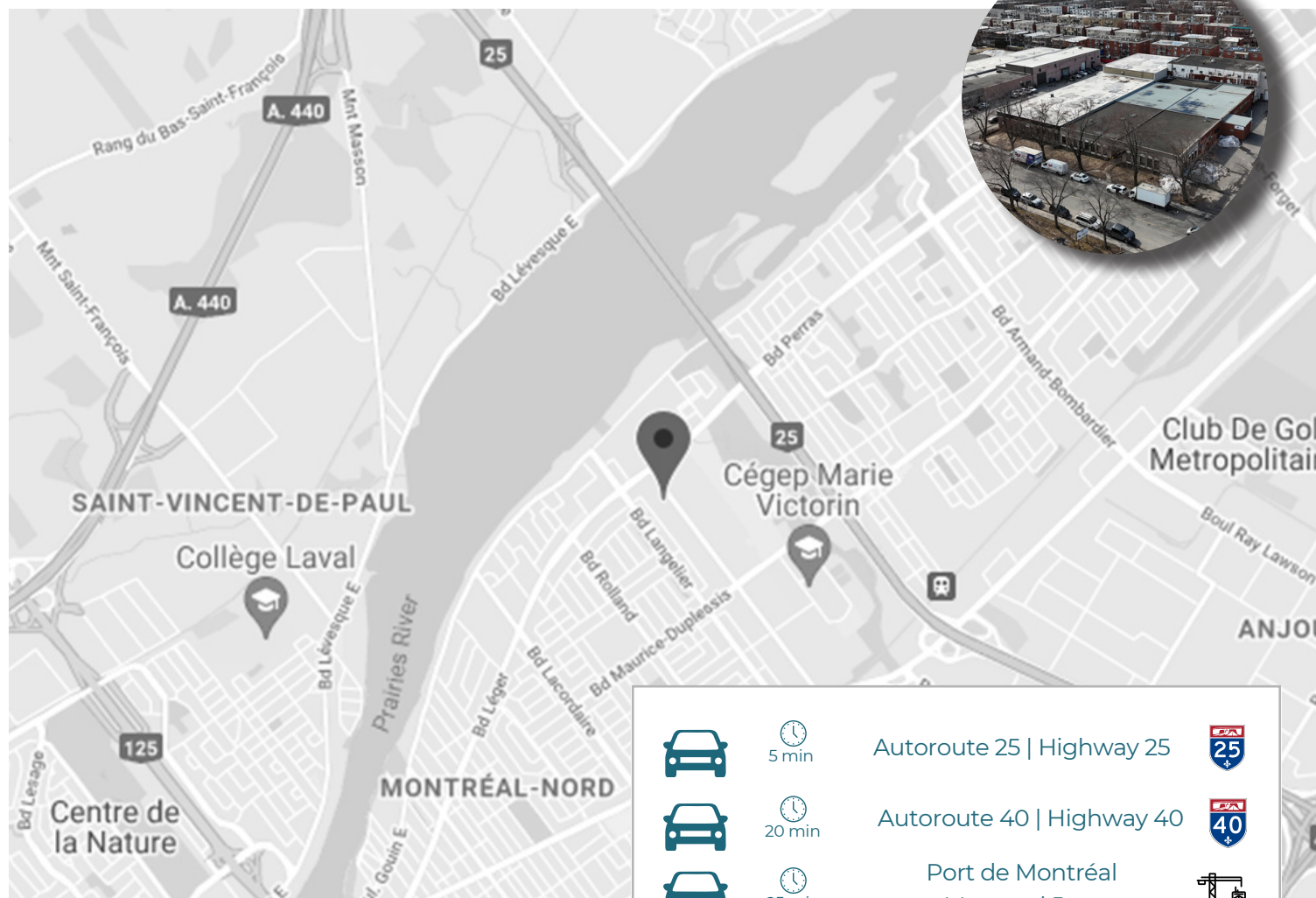














Plan
d'étage
Floor plan



1400, Innovation
Montréal | Québec

À louer | For lease



	 5 min	Autoroute 25 Highway 25	
	 20 min	Autoroute 40 Highway 40	
	 25 min	Port de Montréal Montreal Port	
	 1h	Centre-ville de Montréal Downtown Montreal	

Des **questions** à propos
de cet espace ?

Questions about this
space ?



Contact: **438-771-4742** | location@groupeinspire.ca

