

MONDEV

OFFICE SPACES

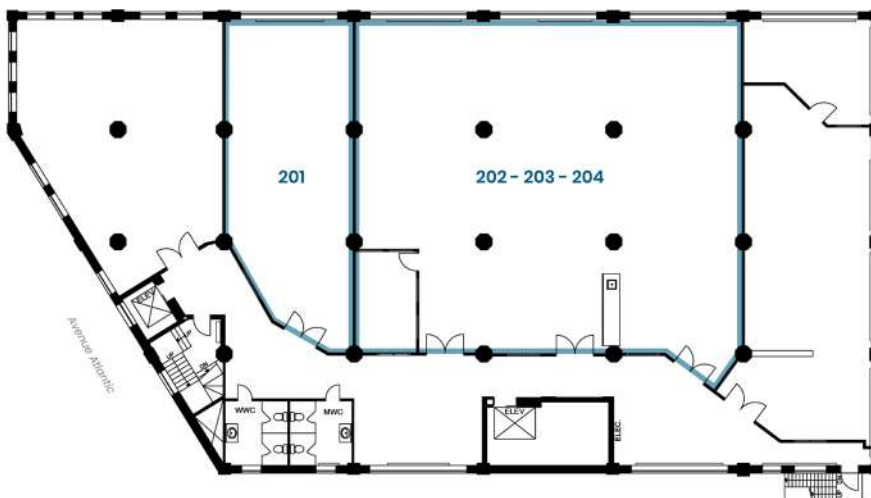
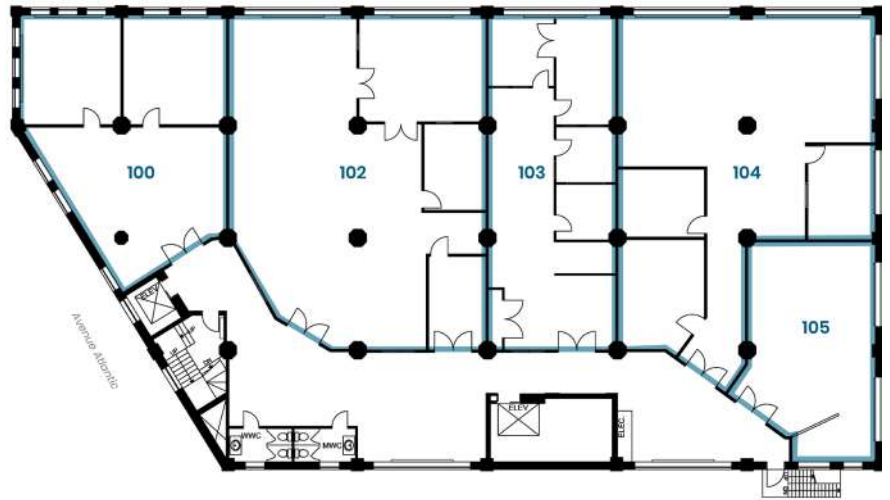
for lease

400 Atlantic Av.



FLOOR 1

Tailored built-out suites available, ranging from 800 sq.ft. to 8,000 sq.ft.



FLOOR 2

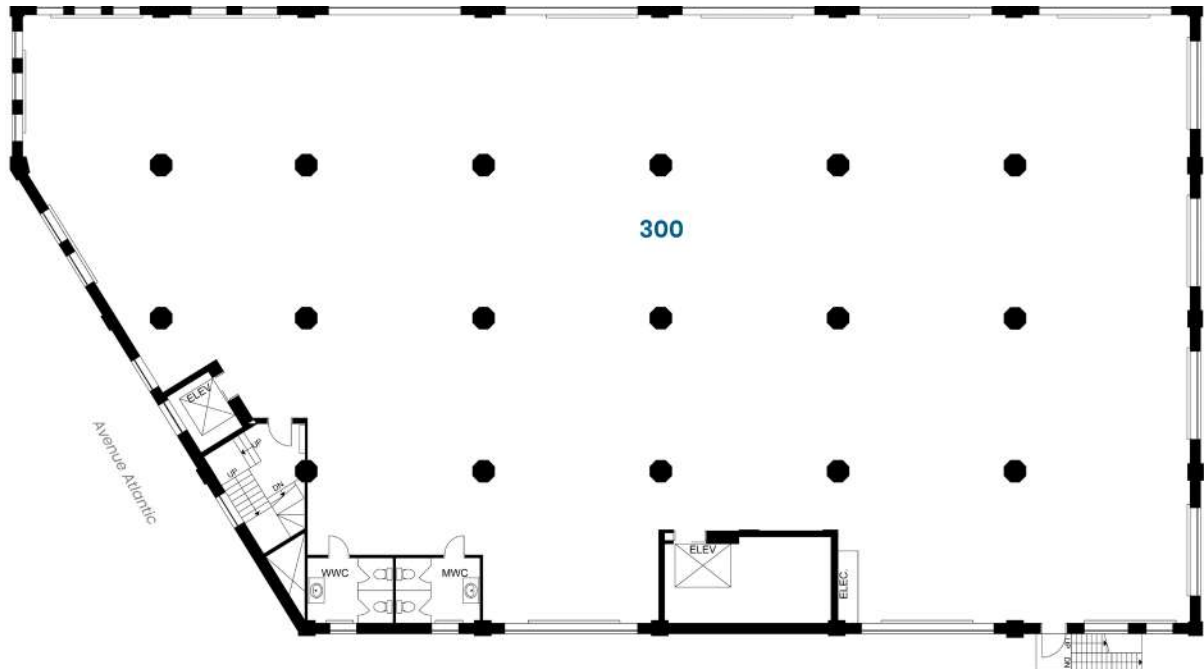
Open-plan and move-in-ready suites showcasing closed offices, conference room and kitchenette.

3

FLOOR 3

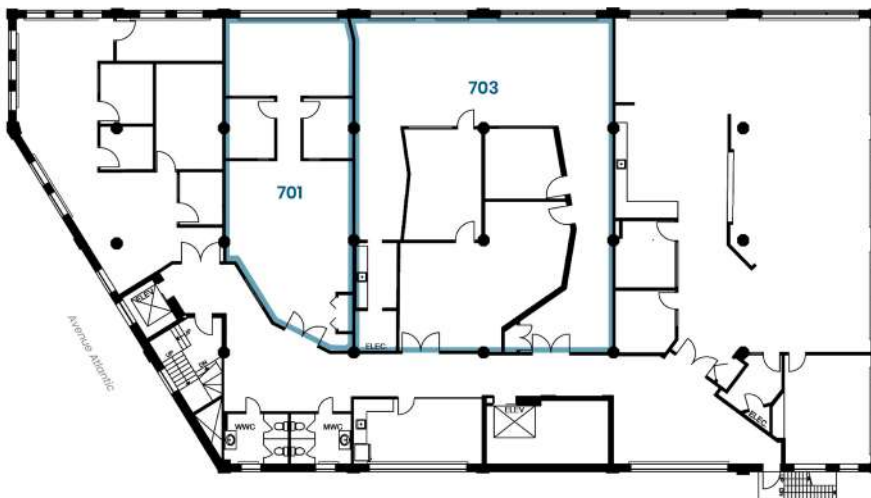
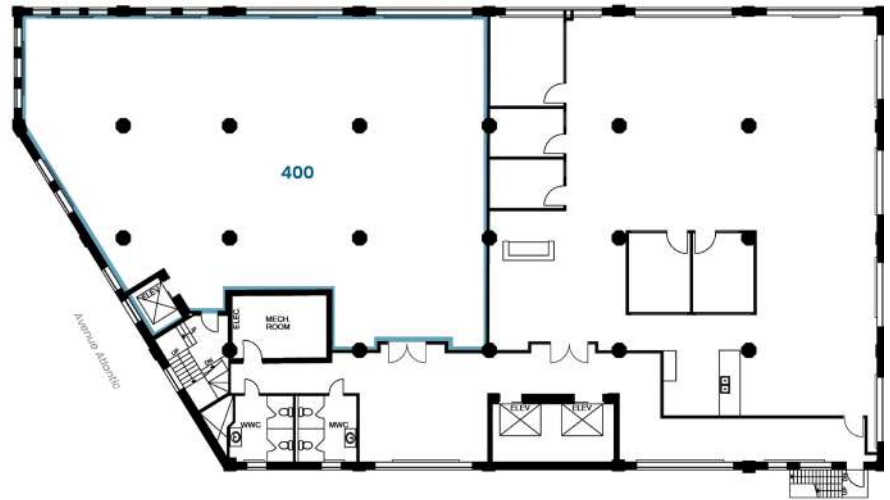
Turnkey floor featuring an expansive, high-end build-out, fully furnished and ready for immediate occupancy.

Space includes a private reception, complete kitchen, multiple conference rooms, private offices and 80 work stations.



FLOOR 4

Corner unit in base-building condition, featuring signature red brick walls and exposed ceilings.



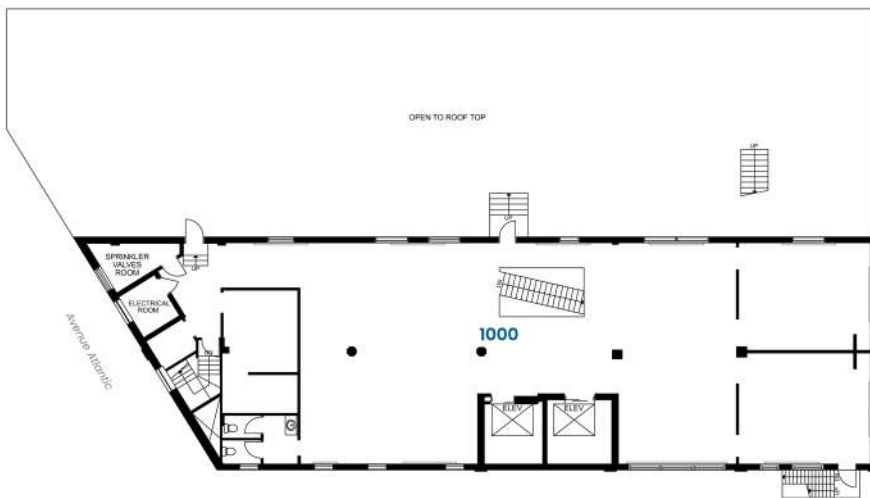
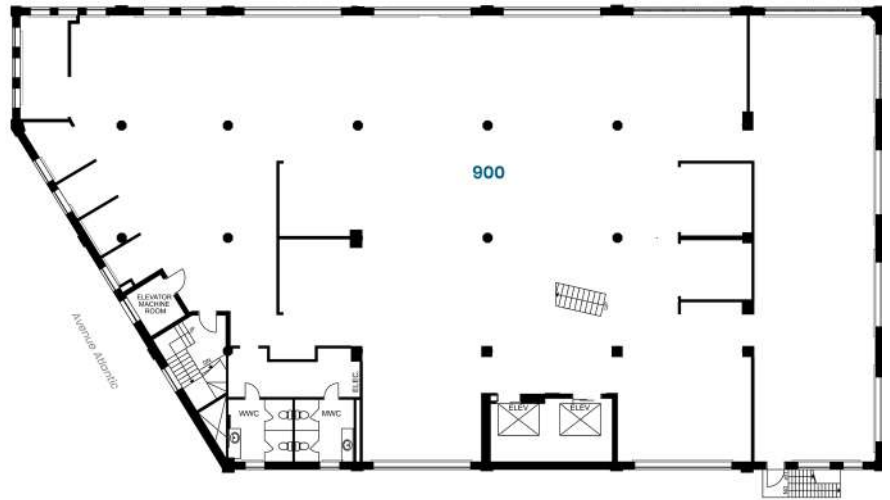
FLOOR 7

Open-concept and move-in-ready spaces equipped with kitchenette and closed offices. Up to 3,800 sq.ft. available.

PENTHOUSE SUITE

14,000 sq.ft.

9



10

FLOORS 9 & 10

Fully built-out penthouse suite featuring its own exclusive rooftop terrace.

FLOOR PLANS

PROPERTY DETAILS

FINANCIAL INFORMATION

LOCATION





PROPERTY FEATURES:

- ▶ Signature red brick walls
- ▶ High-end quality build-outs
- ▶ Hardwood floors
- ▶ Efficient open-plan layouts
- ▶ Newly-replaced windows
- ▶ 11-foot ceilings
- ▶ Central air conditioning

BUILDING AMENITIES:

- ▶ Renowned on-site bakery and café: Hof Kelsten
- ▶ Interior & Exterior parking
- ▶ On-site showers
- ▶ Secured bike room
- ▶ Freight elevator



LEASE TERM

Flexible

NET RENT

Starting at
\$20.00/sq.ft.

ADDITIONAL

RENT EST.
\$11.00/sq.ft.

ELECTRICITY

Included

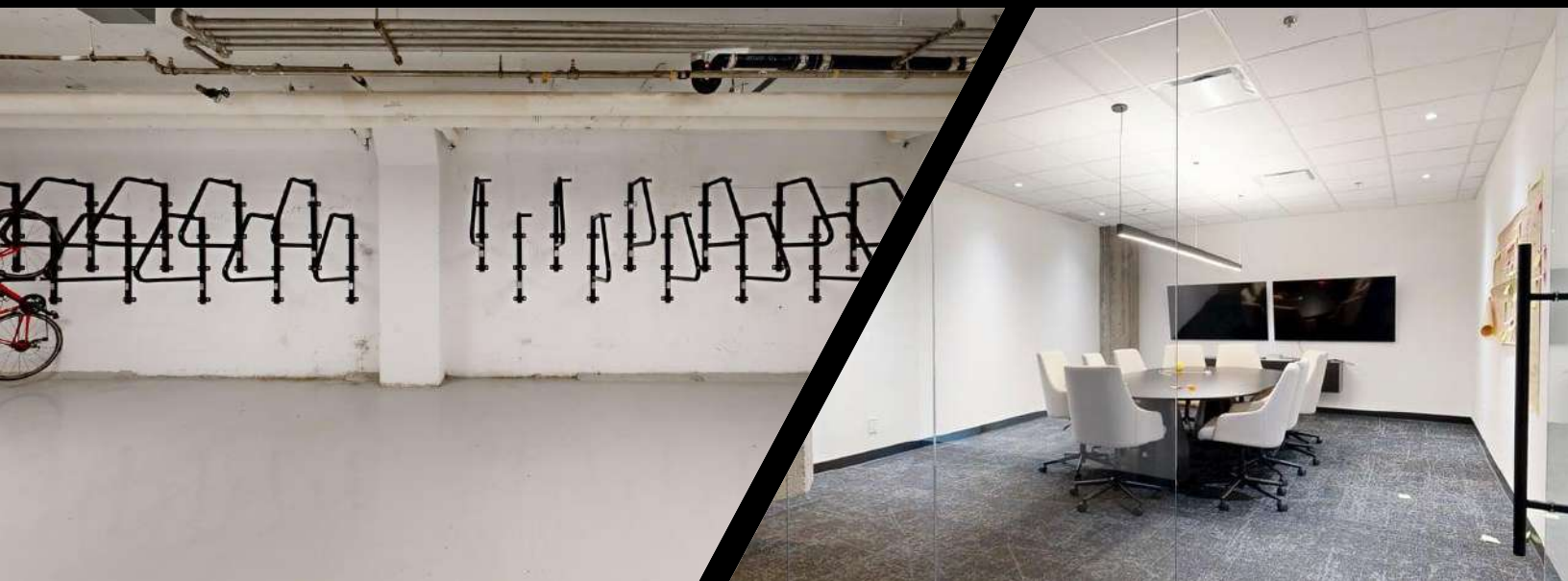
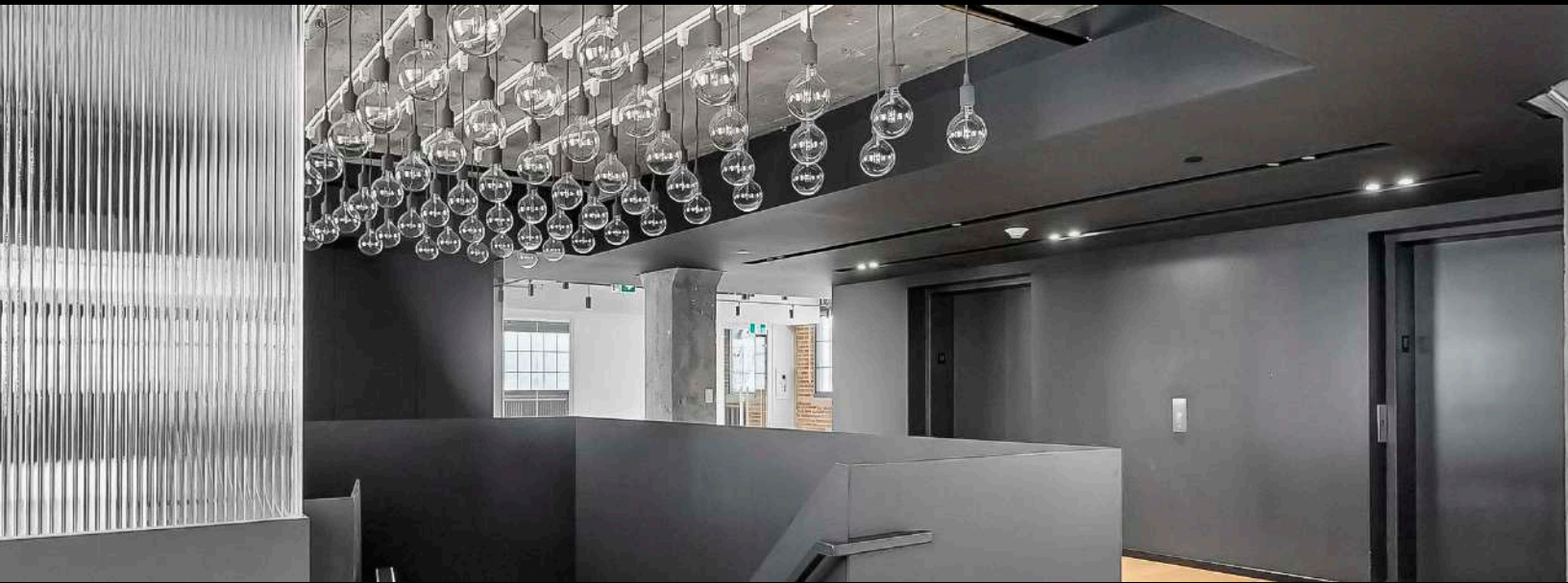
PARKING

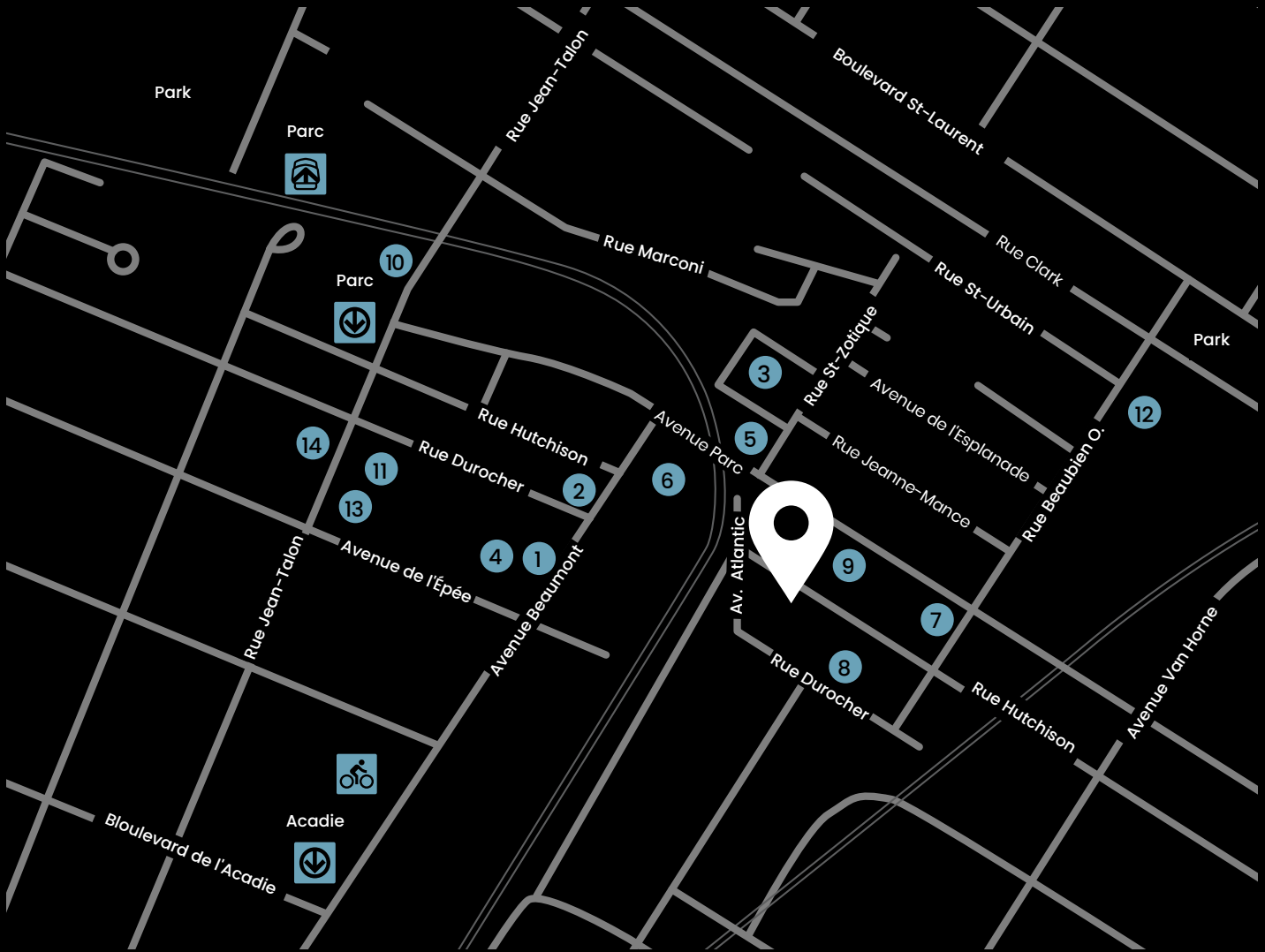
Interior & Exterior
\$200.00+tx/mo

Ratio: 1/1,400

OPTIONS

Available immediatly










Food & Beverage

- 1 Le Piment Rouge
- 2 Segreta Pizza Al Taglio
- 3 Café Guerrero
- 4 Damas
- 5 Bar Cicchetti
- 6 Denise
- 7 Taverne Atlantic

Services

- 8 Gym le quartier outremont
- 9 Le marché fooderie
- 10 Maxi
- 11 Familiprix
- 12 Home Dépot
- 13 BMO Bank of montreal
- 14 TD Bank

Transit

-  **Metro Parc**
11 minutes
-  **Metro Acadie**
14 minutes
-  **Bus**
80, 92, 480
-  **Gare Parc**
16 minutes
-  **Bixi**
10 minutes



Walk score: 95

TANIA D'AVINO
Vice-President, Leasing

514 723-3778
tdavino@mondev.ca

